



Alan Noelle Engineering, Inc

315 E. Canon Perdido, #B Santa Barbara, CA 93101
3639 E. Harbor Blvd, Suite 204 Ventura, CA 93001



Electrical Engineering & Lighting Design

Qualifications Resume

- ❖ Power & Lighting
- ❖ Communications
- ❖ Controls
- ❖ Title 24
- ❖ HCAI
- ❖ Fire Alarm
- ❖ Historic Buildings
- ❖ Lighting Design
- ❖ Emergency Power
- ❖ Clean Rooms
- ❖ Hazardous Areas
- ❖ Green Building



3639 East Harbor Blvd, Suite 204
Ventura, CA 93001



Call Us
805.563.5444



alan@aneng.com
Alan Noelle, Owner, Principal Engineer



Find Us
www.aneng.com

Firm Profile

Summary

Powering the Central & South Coast for 22 years

Alan Noelle Engineering (ANE) is a full service electrical consulting engineering company. Founded in June of 2000 by Alan and Tamika Noelle, in Goleta California. Alan J Noelle started his journey in electrical engineering at the age of 18 and now has over 33 years of work in this field. The company has expertise in all aspects of electrical systems including HCAI work, lighting design, complicated power and controls systems, renewable energy and green building techniques, hazardous locations, clean rooms, fire alarm systems, communications and AV system support. ANE has dealt with not only California's Energy Code (Title 24), but also with the national ASHRAE standards and the LEED system.

Many ANE projects have been within the Santa Barbara and Ventura Counties, including: both the City of Ventura and City of Santa Barbara, Santa Barbara Museum of Art, Santa Barbara Historical Museum, UCSB, SBCC, Westmont College, Santa Barbara Botanic Gardens, and the Santa Barbara County Bowl. We have done work in Hawaii, Oregon, and Washington, as well as all over California.

ANE also does extensive work for local health care providers including Cottage Hospital, Pacific Diagnostic Laboratories, and both St John's and Pleasant Valley Hospitals. Our expertise extends to all aspects of commercial, residential, and institutional construction design in both private and the public sector.

Using the latest AutoCAD and REVIT software, ANE produces electrical plans for the building industry. We can deliver hardcopy plans, or pdfs electronically, allowing for a quicker flow of information. If needed, ANE can provide consultations, coordination, studies, code analysis, and reports. We have recently added Vince Tarango to our office, and are now also offering all levels of Lighting Design.

The firm continues to commit to delivering the highest quality of electrical system design. Informed by current technologies, budget, schedule, and client priorities. We strive for perfection in service and product. ANE will continue to deliver the same customer centered enthusiasm as the day we first opened our doors 22 years ago.

We have extensive experience in many areas, including HCAI work, lighting design, complicated power and controls systems, renewable energy and green building techniques, hazardous locations, clean rooms, fire alarm systems, communications and AV system support. We would be happy to discuss any special project considerations.

Business data

- California C Corporation
- Employer Identification Number 86-2069773
- Business License: 54646 Santa Barbara; 4124832 Ventura; 14102419 Carpinteria.
- Small Business (Micro) ID 1744607 certified under DGS
- Duns 015952877
- Secretary of State Entity Number C4689296

Our vision

We strive for three things: excellence and clarity in our plans, above and beyond customer service, and an honest day's work for an honest day's pay. To that end, we are open, honest and fair in all our actions, and we strive to always be available to our clients in person.

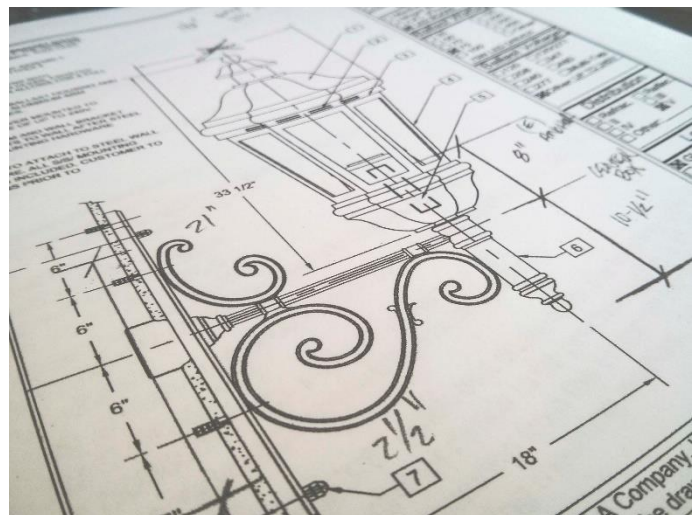
What we do

ANE produces electrical plans for the building industry. We also provide consultations, coordination, studies, code analysis, and reports, as needed by our clients.

We have extensive experience in many areas, including HCAI work, DSA work, lighting design, complicated power and controls systems, renewable energy and green building techniques, hazardous locations, clean rooms, fire alarm systems, communications and AV system support. We have dealt with not only California's Energy Code (Title 24), but also with the national ASHRAE standards and the LEED system. Alan would be happy to discuss any special project considerations.

How we do it

Our office uses the latest AutoCAD and REVIT software as a tool to produce electrical plans. We have solid experience using or interfacing with most of the programs found in our industry. We can deliver hardcopy plans, or pdfs electronically, allowing for a quicker flow of information.



Leadership Qualifications

Alan J Noelle, PE

Principal Engineer, Owner

Alan Noelle started his journey in electrical engineering in 1985 at the age of 18, working for one of the most respected local engineers. With time off for a college education at SBCC and Cal Poly SLO, he has been working with the local industry ever since.

Introduction/Duties

Project estimating, supervision, electrical engineering, lighting design, specification writing, site inspections, construction cost estimating, manual and AutoCAD drafting.

Background

33 years as an Electrical Design Engineer. 22 years as a business owner. Prior to that, 8 years as an Electrical Engineer with Smith Engineering Associates, and 3 years as a designer/drafter with Winstrom Associates.

Society Membership

International Association of Electrical Inspectors
Illuminating Engineers Society
American Institute of Architecture
National Fire Protection Association

Education

- Bachelor of Science in Electrical Engineering from California Polytechnic State University, San Luis Obispo, CA.
- California Registered Professional Engineer No. E015175
- Hawaii Registered Professional Engineer No. 18687
- Oregon Registered Professional Engineer No. 100066PE
- Washington Registered Professional Engineer No. 22023995



Office Address

3639 Harbor Blvd.
Ventura, CA 93001

Office

805.563.5444

Mobile

805.570.0360

E-Mail

Alan@aneng.com

Leadership Qualifications

Vince Tarango, IES, IALD

Director of Architectural Lighting Design

Vince has over 18 years' experience in the electrical and lighting Design Industry both domestic and abroad. With a background in Fine Art and Electrical Construction, he brings a unique approach that is practical, purposeful and artistic. Vince is a professional member of the IALD (International Association of Lighting Designers), IES (Illuminating Engineering Society) and a past member of the Community Advisory Council to Lightfair. Vince's knowledge of commerce, electrical construction, and design combined with an artist's awareness of light and space has proven to be invaluable to his clients.

Memberships

- International Association of Lighting Designers (IALD), Professional Member
- Illuminating Engineering Society Member

Education

- BA, University of California, Santa Barbara, CA



Office Address

3639 Harbor Blvd.
Ventura, CA 93001

Office

805.563.5444

Mobile

805.453.3565

E-Mail

Vince@aneng.com

Highlighted projects – Independent/Assisted Living

Clearwater Tustin

The project consisted of a new, 2-story, ground-up, residential care facility with 166 assisted living units, 29 memory care units, amenity space, courtyard area, and surface parking area. Amenities included library, gym, beauty salon, theater, activity room, bistro area, living room, dining room. The project also included commercial kitchen and commercial laundry room.



Clearwater Tustin

Casa Dorinda Memory Care

As one of the highest rated luxury retirement communities in the United States, Casa Dorinda boasts the best offerings in Life Care; hosting Independent Living, Assisted Living, Memory Care, and Skilled Nursing all in one community. ANE designed and helped the Facility build their memory care center, remodeled the new Dining Hall and Kitchen, added the Bistro and also a number of new residences and cottages.



Casa Dorinda Memory Care

Living, & Memory Care

- Casa Dorinda Independent Living & Cottages
- Villa Del Sol Westgate Senior Housing
- Siena at Westgate Ranch
- Bella Riviera
- Willow Springs Phase I & II
- Lompoc Y Specic Plan
- Lillie Avenue
- Chapla One
- 121 De La Guerra
- Knollwood Meadows
- Vintage Walk
- Ellwood Apartments
- Sumida Gardens
- Ralston Courtyards Apartments
- Easton Apartments
- Cortona Apartments
- HASB Sycamore Court
- KITP

Highlighted projects – Residential/Multi Unit

HUB on Campus, LA Figueroa

Electrical and lighting design for a new, ground-up, seven-story building, with one level of subterranean parking garage, grade level and partial parking, 163 student housing living units at levels 2 through 7, and a roof-top pool and spa area. All living units appliances were electrical. Designed commercial kitchen space for future tenant; coordinated Electrical infrastructure for anticipated load requirements; coordinated subterranean parking lighting.



HUB on Campus, LA Figueroa

Willow Springs I & II

Multi-building, multi-unit apartment complex complete with associated common buildings and site improvements, approximately 200 units. At the time of construction, it was the largest multi-unit housing community in the Santa Barbara area.



Willow Springs I & II

Housing & Multi Unit

- Hotel Carrillo
- Bella Riviera
- Lompoc Y Specific Plan
- Chapala One
- 121 De La Guerra
- Siena at Westgate Ranch
- Knollwood Meadows
- Vintage Walk
- Ellwood Apartments
- Sumida Gardens
- Ralston Courtyards Apartments
- Garden Court Apartments
- Easton Apartments

Highlighted projects – Office & Industrial Buildings

Artic Cold

Working for Electrical Contractor, complete electrical/lighting design for 5000,000 sq ft refrigerated fruit processing/trucking facility. The entire facility is refrigerated, and has three separate utility lines into it, for reliability.



Artic Cold

DuPont Displays Essential Labs

30,000 sq ft of cleanroom type and electronics labs, including life testing, machine shops, supporting offices and cafeteria.



DuPont Displays Essential Labs

Office Industrial Buildings

- Santa Barbara County Supervisor's Office
- Ericsson, Phases I & II
- Ericsson, Phase III
- Planned Parenthood Expansion
- Santa Barbara Bank & Trust Operations Center
- Santa Maria Red Cross Emergency Power
- Global Silicones
- SRS
- Toxic Footwear
- Planned Parenthood Camarillo
- Citrix Building I
- Citrix Building II
- North Grummin Oxnard
- Log Me In (Citrix Building III)
- SBCH PDL Laboratories

Highlighted projects – Green Building Work

Olympic Archery Training Center

LEED complex to train US Olympic hopefuls in Chula Vista. Including residential apartments and dining facilities.

West Coast Asset Management

First LEED CI Platinum project in the state of California. Office building, including solar and daylight harvesting systems.



Olympic Archery Training Center

Green Building Work

- Chase Palm Park Relighting
- Santa Barbara Cottage Hospital Child Care Center
- Santa Barbara County Supervisor's Office
- UCSB SNARL Lab
- UCSB Sedgewick Reserve
- Thacher School Dining
- Thacher School Creativity and Technology Classroom Building
- SBCH PDL Laboratories
- Carpinteria Sanitary District
- NuSil Carpinteria
- Ericsson, Phase III
- DuPont Displays Essential Labs
- Ericsson, Phases I & II

Highlighted projects – Historic Building Work

Santa Barbara Museum of Art Expansion

Addition to the museum of galleries and offices, nearly doubling the size of the facility.



Santa Barbara Museum of Art

The Granada Building

Reconstruction/remodel of the historic Santa Barbara Granada Building, a historic high-rise theatre/office building.



The Granada Building

Historic Building Work

- Chase Palm Park Relighting
- Elings Park Remediation
- Westside Community Center Open Space Renovation
- Brooks Hall
- Francheschi House
- Lompoc Veterans Memorial Building
- Santa Barbara Botanic Gardens Library
- Santa Barbara Botanic Gardens Vital Mission Plan
- Santa Barbara Botanical Gardens Access Control Systems & Gift Shop
- Santa Barbara Historical Museum Expansion/Remodel
- Santa Barbara Historical Museum Gift Shop

Highlighted Projects – University & Private School Work

Westmont College Dining Commons

Westmont College Dining Commons – interior remodel of Dining Commons, including food service lines.

Thatcher School CET Classroom

New multi-disciplinary building.

University and Private School Work

- UCSB Marine Biology Labs
- UCSB KITP Visiting Faculty Housing
- UCSB TMP
- UCSB Old Gym Weight Lifting Room
- UCSB Biology Shop & Lab
- UCSB Cheadle Hall
- UCSB Environmental Lab
- UCSB Jameson Report
- UCSB Lab Renovation
- UCSB Optics Lab & Offices
- UCSB Old Gym Drama Department
- UCSB Old Gym Arts Department
- UCSB "The Arbor
- UCSB Biology II 4th Floor
- UCSB SNARL
- UCSB Sedgewick Reserve
- UCSB Police
- UCSB Trace Metal
- UCSB Flume
- Westmont College Reynolds Hall
- SBCC LRC
- UCLA Vivarium



Westmont College Dining Commons



Thatcher School CET Classroom

Highlighted projects – Healthcare

Goleta Valley Cottage Hospital (GVCH) Birthing Center

Remodel of the birthing wing.



GVCH Birthing Center

Healthcare

- GVCH CT Scanner
- GVCH Emergency Power Survey
- GVCH Fluoroscopy
- GVCH Gamma Camera
- GVCH Medical Air Replacement
- GVCH Surgery Suite Isolated Power Supply System Study
- GVCH X-Ray Switchboard
- LaVetta Surgical Center
- Morgan Hill/South Bay Surgery Center
- Pacific Heights Surgery Center
- Pleasant Valley Hospital (PVH) Emergency Services Renovation
- PVH Healing Gardens
- PVH SNF Patient Room Lights
- Sansum Endocrinology
- Santa Barbara Cottage Hospital (SBCH) Child Care Center
- SBCH Helistop
- SBCH PDL Laboratories
- SBCH Parking
- Santa Paula Hospital Automatic Doors & HVAC Addition
- Santa Ynez Cottage Hospital (SYCH) AC#3
- SYCH IT Room AC
- SYCH Surgery Lights
- St. John's Regional Medical Center (St. John's) Cogeneration Study
- St. John's Cook/Chill Cart
- St. John's Data Emergency Power Analysis
- St. John's Entry/Tower Lighting
- St. John's Emergency Room Canopy Relighting
- St. John's Healing Gardens
- St. John's Lighting Retrofit
- St. John's Motor Replacement
- St. John's Vent Unit Remodel

Highlighted Projects – Lighting Design

- **Cedars Sinai Internal Medicine** - 4th Floor Marina Del Rey, CA. Inspired by the adjacent Marina, this medical office was designed for flexibility and makes use of daylight wherever possible to enhance the guest experience.
- **Cedars Sinai 1919 Medical Building** - Santa Monica, CA - Medical Office. This project consisted of a complete refresh of a 3-story medical building with multiple functions. Each floor was designed to stand alone and yet remain cohesive with the design aesthetic of the overall building; the top floor oncology suite features a custom design lit sculpture as well as fine art and refined finishes.
- **Schwartz Aesthetic Institute and Spa** - Westlake Village, CA - Medical Office and Surgery Center. This project houses multiple disciplines including Surgery, Post Op, Medical Spa and office. We worked closely with the architect to create a luxurious environment similar to a hotel featuring hospitality inspired details and finishes.
- **The 24 Apartments** - Chatsworth, CA - Multi-Family. Designed for the working professional, the 24 is part of a large scale development covering multiple acres in Chatsworth, CA. With 4 buildings and a total of 660 apartment units, we provided lighting design for all exterior amenity spaces, roadways, building facade, and pool decks.
- Cedars Sinai Family Urgent Care - Culver City, CA
- Cedars Sinai Brentwood Urgent Care & Dermatology Clinic, Los Angeles, CA
- Cedars Sinai Medical Center - Tarzana, CA
- Hot 8 Yoga - Sherman Oaks, CA
- Hot 8 Yoga, Pasadena, CA



Cedars Sinai Internal Medicine



Cedars Sinai 1919 Medical Building



Schwartz Aesthetic Institute & Spa



The 24 Apartments

Schedule of Fees

Hourly rate

All our office's services shall be accomplished on an hourly basis based on the following fee schedule. Standard reimbursables, such as plan check blue printing and copying costs, shall be billed as needed, but are usually absorbed by our office.

Lighting Designer (Principal)	\$230/hr
Electrical Engineer (Principal)	\$190/hr
Electrical Engineer (Senior)	\$160/hr
Lighting Designer	\$180/hr
Electrical Designer	\$135/hr
BIM Manager	\$120/hr
BIM/CAD Drafting	\$ 95/hr
Office Staff Support	\$ 80/hr

Reimbursable expenses

Reimbursable expenses are in addition to compensation for basic and additional services, and include expenses incurred by ANE, its employees, and sub-consultants (if any) in the interest of the project. Reimbursable expenses will be invoiced and paid at cost plus fifteen percent and include:

- Expense of transportation and mileage in connection with the project. Mileage reimbursement rate will be at current Internal Revenue Service standard mileage rate.
- Non-submittal plotting for delivery to team.
- Courier expenses.
- Fees paid for securing approval of authorities having jurisdiction over the project.
- Supplier and/or Vendor onboarding fees.
- Expense of reproduction, postage, and handling of drawings, specifications, and other project documents.
- Expense of additional insurance coverage or limits, including professional liability insurance, requested by the Owner in excess of that normally carrier by Walsh Engineers and its sub-consultants.
- Expenses in connection with authorized out-of-town travel, if applicable. Travel expenses include round trip air fare, airport parking, meals, car rental, lodging, and travel time (in-flight).
- ANE will include copies of invoices and/or receipts.

Insurance Limits

Commercial General Liability

- \$2,000,000 each occurrence
- \$4,000,000 general aggregate

Automobile Liability

- \$2,000,000 combined single limit
- Coverage includes hired and non-owned autos only

Umbrella Liability

- \$1,000,000 each occurrence
- \$1,000,000 aggregate

Professional Liability

- \$2,000,000 per claim
- \$4,000,000 aggregate

Worker's Compensation

- \$1,000,000 each accident
- \$1,000,000 disease, each employee
- \$1,000,000 disease, policy limit

Alan Noelle Engineering, Inc

315 E. Canon Perdido, #B Santa Barbara, CA 93101
3639 E. Harbor Blvd, Suite 204 Ventura, CA 93001